



For reservations, contact the Peregrine Travel Group directly at:
1-855-MY-PEREGRINE or 1-855-697-3734

Hours of operation: Monday to Friday 7:00am to 5:00pm PST. Saturday/Sunday closed.

Heart of China - Volunteer Tour 10 Days / 9 Nights WOW 3

Itinerary

Beijing, China

Day 1 Arrive in Beijing

Upon arrival in Beijing, you will meet an English-speaking guide and go to The Peninsula Beijing for 3 nights stay.
Free at leisure for the remaining day.

Day 2 Beijing Tour [B, L, D]

Visit Tiananmen Square and the Forbidden City
Visit Hutong, traditional courtyard homes, and see how local Beijing residents live.

Day 3 Great Wall, Beijing National Stadium & National Aquatics Center [B, L]

In the morning, visit the Great Wall which stretches over 3,700 miles.
In the afternoon, enjoy exterior views of the Beijing National Stadium and National Aquatics Center, famously known as "Bird's Nest" and "Water Cube".

Xian, China

Day 4 Arrive in Xian & the Shaanxi History Museum [B, D]

Fly to Xian and transfer to Grand Mercure Xian at Remin Square for 2 nights stay.

In the afternoon, marvel the national treasures of the ancient Chinese at the Shaanxi History Museum.

Day 5 Terracotta Museum & Banpo Museum [B, L, D]

Explore the Terracotta Museum and see the buried treasures that took 38 years to complete.

Visit the Banpo Museum, an excavation site housing fascinating ancient artifacts.

Shangri-La, China

Day 6 Arrive in Shangri-La [B]

Fly to Kunming and then take a connecting flight to Shangri-La. Transfer to Paradise Hotel for 4 nights stay.

Day 7 National Parks Tour & Shangri-La Old Town [B, L, D]

Enjoy a day outdoors and breathtaking scenic views of the the Pudacuo National Park, Shudu Lake, Militangya Alpine Pastures and the Bitta Hai National Park.

In the afternoon, visit Shangri-La Old Town.

Day 8 Full Day Volunteer Work [B, L, D]

Full day volunteer work in The Eastern Tibet Training Institute. The East Tibet Training Institute provides vocational training in a variety of subjects to young people from rural areas in Eastern Tibet. On this day, you will join local students to conduct educational activities such as English conversation classes, games, and cultural exchange.

Day 9 Local Tibetan Crafts [B, L, D]

Spend a day with a local Tibetan. You'll learn wood crafts from locals of Sanjia Village and pottery from locals of Tangdui.

Day 10 Return to Hong Kong [B]

In the afternoon, depart from Shangri-La to Hong Kong (transit in Kunming) and enjoy a convenient connection back to the U.S.

Package Details:

Package price includes:

Hotels:

- Doubletree by Hilton Beijing Hotel or similar hotel with Superior Room for 3 nights, with daily breakfast at hotel
- Xi'an Grand Mercure on Renmin Square or similar hotel with Superior Room for 2 nights, with daily breakfast at hotel
- Shangri-La Paradise Hotel or similar hotel with Superior Room for 4 nights, with daily breakfast at hotel.

Entrance fees to sightseeing as stated in the itinerary

Airport transfers and ground transportation as stated in the itinerary

Meals as stated in the itinerary:

B = Breakfast in hotel

L = Lunch outside of hotel at designated local restaurant

D = Dinner outside of hotel at designated local restaurant

Private English speaking tour guide and driver

China domestic airfare (Economy Class)

- Beijing to Xi'an
- Xi'an to Kunming
- Kunming to Shangri-La
- Shangri-La to Kunming

Inbound and outbound international air (Economy "L" Class) through the Cathay Pacific Package. Routing based on specific package purchased.

This price excludes:

- Gratuities for the Guides and Drivers
- Incidentals in hotel such as dry cleaning, phone, mini bar
- Any meals not mentioned in the itinerary
- Travel Insurance
- China visa

Note:

- **Hotels used may be changed prior to tour but will be replaced with similar category of hotels**
- **Price and availability subject to change without notice until deposit is received**

- For Terms and Conditions, please go to www.PeregrineTravelGroup.com

Cities & Tour Details:

As the capital of China, **Beijing** is one of the world's truly imposing cities, with a 3,000-year history and 11 million people. Covering 16,808 square kilometers in area, it is the political, cultural and economic center of the People's Republic of China. Situated in northeast China, Beijing adjoins the Inner Mongolian Highland to the northwest and the Great Northern Plain to the south. Five rivers run through the city, connecting it to the eastern Bohai Sea. Administratively, the Beijing municipality equals the status of a province, reporting directly to the central government. Rich in history, Beijing has been China's primary capital for more than seven centuries. China's imperial past and political present meet at Tiananmen Square, where the Forbidden City palace of the emperors gives way to the Great Hall of the People congress building and the mausoleum of Chairman Mao Zedong. The old city walls have been replaced by ring roads, and many of the old residential districts of alleys and courtyard houses have been turned into high-rise hotels, office buildings, and department stores. Beijing, a dynamic city where the old and new intermingle, remains a magnet for visitors from inside and outside China

Xi'an is a city with incredible history, as well as a prosperous modern city. As the capital city of Shaanxi province, it holds a key position in the fertile plain between the highland plateau of the north and the Qinling Mountains to the south. Xi'an has been the capital of eleven dynasties for more than 1100 years. Along with Rome and Constantinople, this city played a vital role in bridging the gap between east and west. There are important sites and relics in this city. The Terracotta Army of Qin Emperor is regarded as the eighth wonder of the world

For many years the debate went on to determine where is the **Shangri-La** as described in *James Hilton's Book Lost Horizon*. It was not until few years ago that the international debate ended and confirmed that Diqing of Yunnan Province was indeed what James Hilton was writing about. As a result, Diqing is now officially named Shangri-La and has been designed a UNESCO destination.



Tiananmen Square

Tiananmen Square is the largest downtown square in the world. It covers an area of 44 hectares, big enough to hold one million people. Here is the most sacred place for Chinese people. Beijing is the heart of China, and Tiananmen Square is the heart of Beijing.



The Forbidden City

Forbidden City was the imperial palace during the Ming and Qing dynasties, which is the largest palace complex in the world. It surrounded by 10-meter high walls and a 52-meter wide moat. It covers 74 hectares and has 9,999 rooms. In the Forbidden City, you can get more knowledge about the eastern architecture, splendid painted and beautiful craftwork.



The Great Wall

The Great Wall is perhaps China's most famous and most mythologized site. Several sections are conveniently visited from Beijing, including at Badaling, the most popular site, about 70 km (43 mi.) northwest of Beijing and at Mutianyu, 90 km (56 mi.) northeast of Beijing. These impressive brick and earth structures date from the Ming dynasty, when the wall was fortified against Mongol forces to the north. The Ming wall is about 26 feet tall and 23 feet wide at the base, and could accommodate up to six horsemen riding abreast. Watch towers, built on high points every 200-300 meters or so with small

garrison forces, used fire signals or fireworks as a means of communication. These stretches of the wall are part of a system that extends from the Shanhaiguan fortress on the Bohai Gulf in the east to the Jiayuguan fortress in the west, altogether some 6000 km (3700 mi).



Hutong Tour

Hutong is an ancient city alley or lane typical in Beijing. Surrounding the Forbidden City, many were built during the Yuan, Ming, and Qing dynasties. Hutong is composed by Siheyuan which the traditional residence of Beijingers, each consisting of a rectangular courtyard surrounded by one-storied tile-roofed houses, usually one to six meters wide.



By visiting Hutong, it is a good way to see how traditional residents live and a kind of life style that keep several hundreds. Visit local family who live in Hutong and talk with them to know how they live. Take a ride around the Hutong neighborhood in a rickshaw.



Visit local calligrapher

A calligrapher and lives in Hutong during his whole life. His house is 300 years old. He knows much more about Hutong area.



Local family

Be a Beijing local resident for a day and experience the local life in the family for a while or just learn to cook in local flavor.



Beijing National Stadium

The Beijing National Stadium, also known as the bird's nest, will be the main track and field stadium for the 2008 Summer Olympics and will be host to the Opening and Closing ceremonies. In 2002 Government officials engaged architects worldwide in a design competition. Pritzker Prize-winning architects Herzog & de Meuron collaborated with Arup Sport and China Architecture Design & Research Group to win the competition. Contemporary Chinese artist, Ai Weiwei, is the Artistic Consultant for design. The stadium will seat as many as 100,000 spectators during the Olympics, but this will be

reduced to 80,000 after the games. The structural elements mutually support each other and converge into a grid-like formation - almost like a bird's nest with its interwoven twigs. The spatial effect of the stadium is novel and radical, yet simple and of an almost archaic immediacy, thus creating a unique historical landmark for the Olympics of 2008.



National Aquatics Center (Water Cube)

The Water Cube employs water as a structural and theatrical "leitmotiv" with the square, the primal shape of the house in Chinese tradition and mythology. The structure of the water cube is based on a unique, lightweight construction, developed by Arup and CSCEC with PTW, and derived from the structure of water in the state of aggregation of FOAM as deduced by. Behind the apparently random appearance hides a strict geometry found in natural systems such as crystals, cells and molecular structures. By applying novel materials and technology, the

transparency and randomness is transposed into the inner and outer skins of ETFE cushions. Unlike traditional stadium structures with gigantic columns, beams, cables and backspans, to which a facade system is applied, in the water cube design the architectural space, structure and facade are one and the same element. Conceptually the square box and the interior spaces are carved out of an undefined cluster of foam bubbles, symbolizing a condition of nature that is transformed into a condition of culture. The appearance of the aquatic centre is a "cube of water molecules" - the WATERCUBE.



Shaanxi History Museum (Xian)

Shaanxi History Museum Shaanxi Province is the birthplace of the ancient Chinese civilization. Xi'an City was the capital city in thirteen dynasties which in total lasted over 1100 years. The Shaanxi History Museum considers it an obligation to be a showcase of ancient civilizations. It was opened to the public in 1991. Over 700,000 people visit this national treasure each year.



Museum of Terracotta Warriors and Horses of Emperor Qin Shi Huang

The Terracotta warriors and Horses are the most significant archeological excavations of the 20th century. Upon ascending the throne at the age of 13 (in 246 BC), Qin Shi Huang, had work begun on his mausoleum. It took 38 years to finish. It is speculated that many buried treasures and sacrificial objects had accompanied the emperor in his afterlife. It is a sight not to be missed by any visitor to China.



Banpo Museum (Xian)

The Banpo Museum was built at the base of the excavations of the Banpo site. The Banpo Site is a typical Neolithic matriarchal community of the Yangshao Culture dating back about 6,000 years. Here a lot of relic exhibited to show how ancient people live.



Pudacuo National Park (Shangri-La)

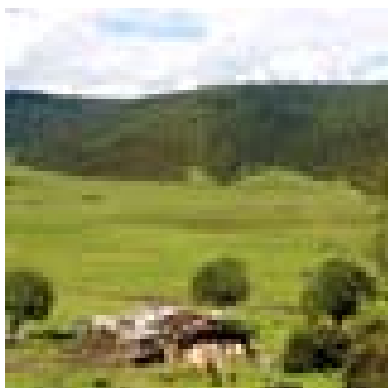
Pudacuo National Park in Shangri-La is 22 kilometers away from the hotel. Included in the natural reserve is an important part of Three Rivers. The park is divided into seven parts, including natural ecology and manmade landscape.

Shudu Lake



East of Shangri-La, Shudu Lake is the biggest lake in the county surrounded by an awe-inspiring landscape of lush pastures and a dense forest of fir spruce and birch. Each Spring and Summer, herds of yak and goat can be seen grazing beside the lake.

Militangya Alpine Pastures



A trip to Shangri-La would be incomplete without a visit to Militangya Alpine Pastures. Here you'll enter a paradise where you can simply take in the picturesque natural beauty of the never ending pasturelands and unique animals that call this place home.



Bitta Lake

Bitta Lake is a huge alpine lake that is 3000 meters in length and 700 meters in width. Most notable to this lake are the beautiful azaleas that bloom each year



The Old town

The Old town of Shangri-La is made up of traditional wooden Tibetan homes, religious buildings alleys and squares. It is distinct from the newly developed town that has grown alongside it. You will be able to see the old versus the new architecture and appreciate the difference in time and history.



The Eastern Tibetan Training Institute

The Eastern Tibetan Training Institute is a non-profit organization focused on giving local Tibetan students the vocational skills they'll need to succeed in the rapidly developing tourism economy of the Shangri-La regions. For more information, visit the Eastern Tibetan Training Institute website

Sanjia Village



Sanjia Village is a natural village tucked away in the Youngchun country that is famous for its beautiful handmade wooden bowls. Experience true Tibetan culture as local residents explain the art and intricate detailing behind this traditional craftsmanship, otherwise known as 'orweju'

Tangdui Village



Tangdui Village is most famous for its exquisite artisan pottery making that includes everything from teapots to hotpots. Here, you'll spend a day following a local family as you experience the daily activities of Tibetan and even learn the intricate art of making Tibetan handicrafts at the Shangri-La Institute.

Doubletree by Hilton Beijing

168 Guang An Men Wai Avenue, Beijing, China 100055



The new hotel is conveniently situated next to the Central Official District of Beijing (COD) and Beijing's prestigious Financial Street business district.

The hotel has 547 rooms

Hotel Amenities

Automated Teller (ATM) Baggage Storage
Beverage Area, Complimentary Concierge Desk
Foreign Currency Exchange Furrier Gift Shop
Laundry/Valet Service Lounge
Luggage Hold Multi-Lingual Staff Room Service
Safety Deposit Box

Photo Gallery



Hotel

Description

Guest Room: Designed in a contemporary style, this 30 square meter room is equipped with working and seating areas, 32 inch flat TV, HSIA, iron/ironing board, standing shower, in room safe and coffee, tea maker.

Location: The Doubletree by Hilton Beijing hotel is located at the South West 2nd Ring Road, just 38 km/24 mi from Beijing Capital International Airport (PEK). Our stylish new hotel is conveniently situated next to the Central Official District of Beijing (COD) and Beijing's prestigious Financial Street business district. Our guests enjoy fast and easy access to all of Beijing's major attractions. The Doubletree by Hilton hotel is within 7 km/4 mi of the historic Dong Cheng District and Tian'anmen Square, the red-walled Forbidden City and Imperial Palace, Beijing Zoo, Panjia Yuan Antique Market and the Temple of Heaven.

Restaurant: Chinese cuisine offering delicious food in a fantastic environment! The restaurant is located on the 3rd floor and features 12 private dining rooms.

Grand Mercure Xian on Renmin Square

319 Dongxin Street, Xian, Shaanxi Province 710004, People's Republic of China



The only internationally-managed four-star hotel in Xian, Mercure Xian on Renmin Square extends to travellers superior and comfortable accommodation at reasonable rates. Elegant and cosy, it provides comprehensive deluxe facilities and services and an ideal location - within the Renmin Square Xian complex, with easy access to the city's major commercial district. The hotel has 103 rooms

The hotel has 547 rooms

Photo Gallery



Hotel Amenities

Safe Voicemail Business Centre
International satellite TV programs
Pay-per-view channels 24-hour room service
No-smoking rooms Reduced mobility room
Smoke alarm and sprinkler systems

Hotel Description

Guest Room: Elegant, comfortable with high standards in services befitting a top-quality hotel, Mercure Xian on Renmin Square has 103 rooms and suites - all well-appointed with modern conveniences. For dining, recreation and business, the hotel has a breakfast dining room, seven function rooms and access to all dining and recreation facilities of its sister hotels

Location: Located in the grounds of Renmin Square, in the heart of the commercial and government district, the hotel is minutes away from the major shopping centres and cultural sites and is an ideal choice for all travelers.

Restaurant: Guests enjoy access to a range of outlets at Sofitel Xian on Renmin Square, offering a choice of dining and entertainment.

Shangri-La Paradise Hotel, Yunnan

Changzheng Middle Road, Shangri-La County, Zhongdian, Yunnan



The Five-Star Paradise Hotel, completed in 2004, is, at the time of writing the biggest hotel in town. An amalgamation of about six or seven different interior design styles, it features rooms overlooking a courtyard with a (cold) pool, a sauna, and other greenery. The beauty of nature is, literally, right in front of you. The rooms are spacious and bright and are decorated with a soothing palette of colors and warm lighting.

Photo Gallery



Hotel Amenities

Business center Laundry Beauty Salon
Restaurant Car rental Parking
Chess room Health Club Night Club
Tennis Karaoke Gift shops

Hotel Description

Room: Shangri-La Paradise Hotel has 2 presidential suites, 4 deluxe suites, 1 business suite, 14 deluxe single room with independent tub and 250 standard rooms. All the rooms are equipped with independent safe, imported bath equipment, 40 satellite TV programs including HBO and Phoenix TV and 10M static broadband access.

Location: Paradise Hotel is located in the center of Shangri-la county, Diqing city. It is 90 km from Liangjiang Airport and 61 km from the Guilin Railway Station, which provided the guests with a convenient traffic in the whole tour.

Restaurant: The hotel has Chinese Restaurants, Western Restaurants, Tea Restaurants, Tibet-Style Wine Bar, Tibet-Style Flavor Restaurant and 12 private rooms with different minority features. The "Tian Yu" Cave Sauna Room is equipped with hot water massage pool, cold water pool and mud pool, etc. The guests can enjoy Medicine Bath, Milk Bath and Bear Bath, etc.